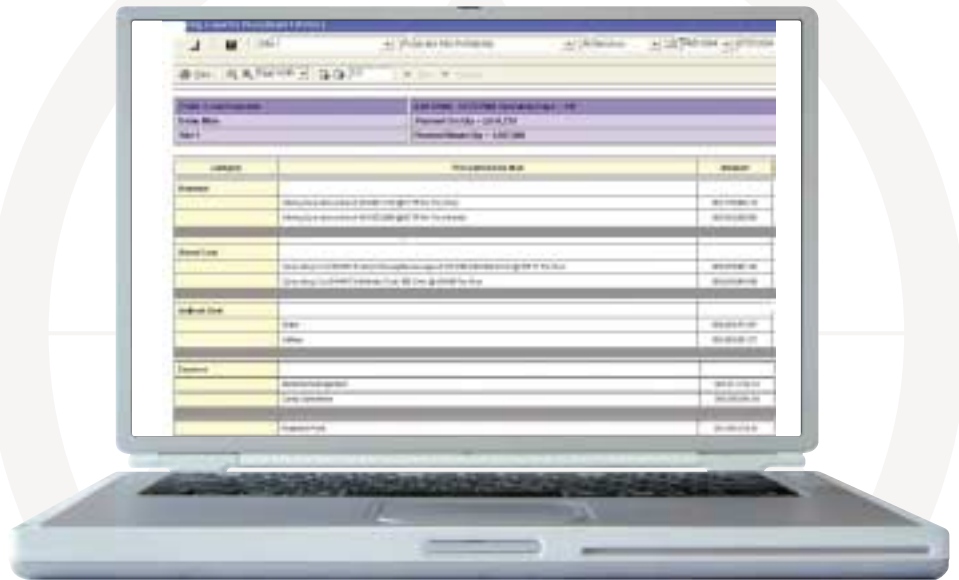


USCCG introduces a new profit optimization system to help you get the most out of your mining operation.

Key Features

- Identifies required support equipment according to changes in the mine layout
- Identifies labor requirements based on skill set and mine area
- Determines maintenance requirements based on operations needs
- Tied to geological mine database
- Can be set for finite (daily, weekly, monthly, yearly) or infinite capacity to calculate life of mine resource demands
- Allows for "what if" modeling based on: grade, productivity, equipment availability and utilization
- Enables management to drill down to analyze profitability at all levels of the organization
- Features user-friendly graphic interface
- Accommodates user-defined business rules
- Can be customized for client application
- Runs on Microsoft Windows™ technology for ease of use
- Supports visual management of site

This unique enabler realistically forecasts profitability, and depicts required manpower and equipment, operating and maintenance support needs, under various conditions and levels of operating performance.



Linked to your mine plan, the system recognizes that as the mine changes, your daily shift, weekly, and monthly production resources and targets need to adjust as well. Under constantly changing conditions, it helps management keep control of the many variables that can mean the difference between success and failure in meeting profit goals.



Other USCCG Automated Solutions

This is only one of several USCCG automated business solutions that are organized into five modules of two to four components each, and that can be “bolted on” to existing ERP systems, mixed and matched, or used on a stand alone basis, as appropriate.

The first of these solutions is the supply chain management module which consists of a sales and operations planning component and an inventory management component. The second, or finite planning module, provides capacity resource planning functionality.

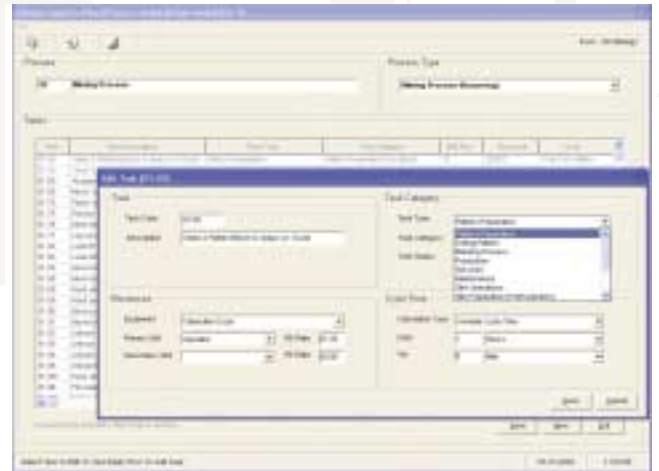
The third is a finite scheduling module that consists of a materials management component and a time-phased scheduling component, while the fourth, or shop floor control module, includes a process monitor and a shop floor control component. The fifth, a shop floor reporting module, includes a data analyzer and a report manager.

Collectively, these solutions developed over five decades and now automated, provide a powerful set of business tools to help improve your operating effectiveness.

If you would like to learn more about USCCG’s automated business solutions call us at **(800) 888-8872** or visit our web site at www.usccg.com to contact the business development executive nearest you.



The system calculates demand placed on all equipment including support equipment such as graders and dozers.



One key output is a forecast of mine profitability based on various operating scenarios and your mining process.



First we make it work. Then we make it last.®

